



COMPANY PROFILE



أنظمة الأمن العالمية ذ.م.م.

Global Security Systems W.L.L.

Email : info@globalsecuritysys.com Web : www.globalsecuritysys.com

Phone: +965-22644052 Mobile: +965-97234920 Fax: +965-22644057



ABOUT COMPANY

Global Security Systems is a security solution provider in the design, supply, implementation, commissioning, testing, training and servicing of security systems. Our parent company licensed in 1972 and the division of security low voltage system established in 2005.

Global Security Systems is committed to their clients for strategic consulting, Design and seamless execution of innovative, state-of-art technology security solutions and other low voltage that are delivered with is agreeable budget and timelines

“100% clientele satisfaction” offer the best services in surveillance, security and safety by adding value to the solutions.



WHO WE ARE

Global Security Systems W.L.L is a market leader for total safety and security solutions in Kuwait and other Middle east Countries. We provide leading edge security services to our clients, we support echo-friendly relationships and we believe in providing cost-effective solution to our customer's. We procure high quality products of international standard from world-renowned manufacturer. We are authorized vendors for supply and installation of security system to leading establishments such as Ministries, Oil Sectors, Business Malls, Hospitals, Schools, Banks and major establishments in public as well as private sectors.



WHY GLOBAL SECURITY SYSTEM

Global Security Systems W.L.L In order to offer our customers with the highest quality of after sales service available, we began leading the industry in only security establishment in Kuwait based that provides multiple services of high quality security systems and services, electronics equipment and Medical equipment all over the middle east.

Global Security Systems W.L.L offers a comprehensive range of service programmes, from fixed-cost maintenance contracts to our basic annual service subscription. But for us service is more than service contracts. We have a number of additional support functions like technical service training, help desk for immediate service assistance, on-line access to e.g. exploded drawings and direct ordering of spare parts.

We also have one of the biggest service organizations in the business with an extensive network of service representatives.

Our after-sales service encompasses:

- Technical help desk
- Centralized spare part stocks for fast delivery
- Preventive maintenance contracts
- Highly skilled service technicians
- 24-hour cover

Our technical team reaches the assignments on the first call at any assignment and at all the time for time for instant technical support and services.

We impart extensive technical training to the operational staff deputed by the respective clients.



MANUFACTURER CERTIFICATES





OUR LATEST PROJECT ACHIEVEMENTS



We are proud to announce our project with Kuwait MOI, for supplying and installation of High Security Road Blocker for maximum security of the premises. In addition to that, early this year they awarded to Global Security Systems to pursue the additional security protection with Bollard System.



We have been awarded another Ministry of Foreign Affairs project for supply and installation of Queue Management System and Annual Preventive Maintenance contract for Shuwaikh Consulate Branch, Liberation Tower Branch and Airport Branch. Since 2015 till date we've been supplying and maintaining their existing systems. We are proud to be at the service of this prestigious Government Institution.



We are honored by Kuwait Ministry of Electricity and Water for Supply and Installation of IP CCTV Surveillance System at Al Doha West Power Station. This project is yet another recognition of our expertise in the field of modern security surveillance solutions.



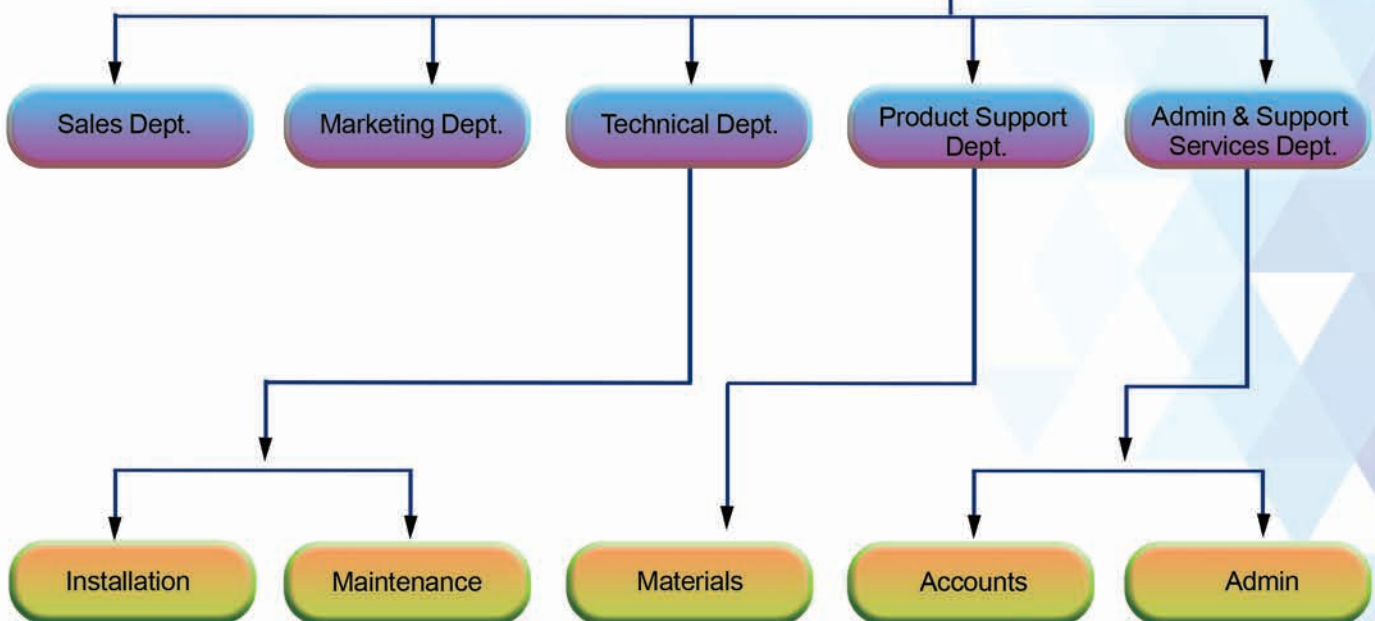
ORGANIZATION CHART

Global Security Systems W.L.L.

Estd. in 2005

Chairman

M.D / Partner





PARTNERS

SG SEMOCON

DIVIO^{Tec}

Tecnoalarm
Hi-Tech Security Systems

CROSS POINT
AUTHORIZED SALES PARTNER

NUVICO

WINLAND
ELECTRONICS, INC.

2DI
Designed & Made in the USA

Ekars

CBC GROUP

milestone
The open platform company

AXIS
COMMUNICATIONS

HUNT

IDTECK

ISGUS
security

Galaxy
Control Systems

auta

GUINAZ

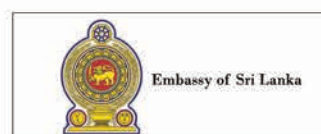
Adams Rite
ASSA ABLOY

ANVIZ

OPTIMUS
SOUND & COMMUNICATION

FINGERTEC

MINISTRIES & EMBASSIES





HOME AUTOMATION

**SIMPLIFY YOUR LIFE....
TAKE CONTROL OF YOUR HOME**



**You and
Your Home
Always Connected**



An automated home brings together security, fire, lightning, temperature control, audio, home theater, surveillance, access control, pool, spa, draper control, sprinklers and anything else that you want so that these systems can talk to each other and work together.

- . An automated home can include some or these components.
- . Systems focus on lightning, temperature, security, audio and video.
- . In an automated home these devices work together to make these home more comfortable, more convenient and safer.



HOME AUTOMATION THE POSSIBILITIES ARE LIMITLESS

Left the house and wonder if your security system is armed or have no security system?

NO PROBLEM;

- . The system motion sensor will report movement and email you that someone is in your house.
- . The same motion sensor can be used to detect rising temperature; Place one in any important area to alert you to the conditions in the room. The sensor also monitors light level and can be used to turn on exterior lighting as darkness falls.
- . Integrate IP based cameras for a total solution.

HOME AUTOMATION



Smart Gateway



Smart Switch



Scene Controller



Smart Socket



Gas Detector



Smoke Detector



Retractable Curtain Motor

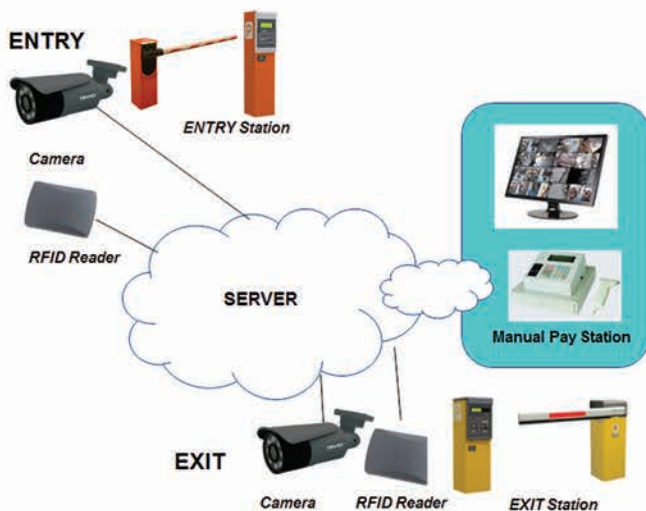
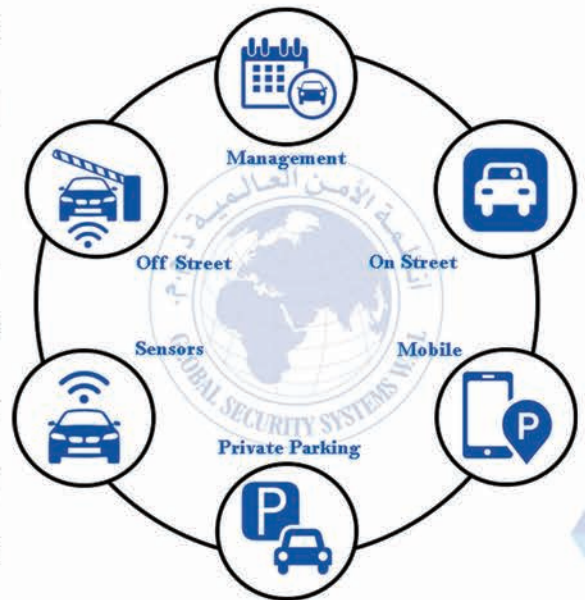


Roller Shutter Motor



Wireless Door Sensor

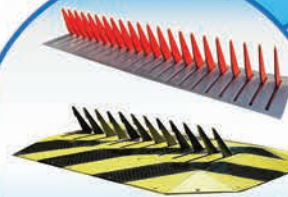
Parking systems are an essential attribute in different walks of our lives. Parking assistance is smart enough to regulate traffic at any point of time in residencies, offices, shopping malls, hospitals and other public places. With the transformation of parking technologies, there are integrated parking equipments and software's that offers best solutions to the parking related complications.



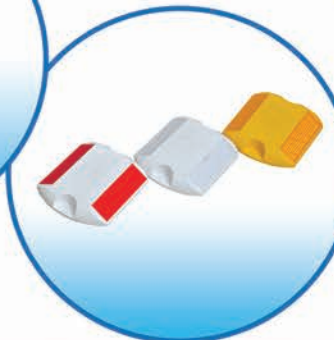
With advanced parking management system it is completely appropriate, comfortable and adjustable to regulate the entry and exit of vehicles in the parking facility. The authorities can smoothly enhance their parking system and manage free flowing vehicles, all throughout the day.



PARKING SYSTEM



- ◆ Light/Heavy Duty Bollard System
- ◆ Traffic Lights
- ◆ Arm Parking Barrier
- ◆ Parking Space Protector
- ◆ Road Blocker System
- ◆ Rubber Speed Bump
- ◆ Tire Killer
- ◆ Road Traffic Cone
- ◆ Car Park Management System
- ◆ Road Studs
- ◆ Vehicle Inspection Mirror





CCTV SYSTEMS

WATERPROOF CAMERA

Professional CCTV
Surveillance
Camera for
Outdoor / Indoor Use





SECURITY & POSITIONING SOLUTION

Safety of property

Allows an area to be open to the public, but at the same time protected against theft in the shops, car parks and fenced areas. The CCTV system ensures the monitoring in real or deferred time of one or more areas of the building.

Image capturing

The main function of a camera is to capture a scene in real time. For example, it may be advantageous to show customers in a shop that the areas are monitored with a CCTV system displaying the images on a monitor connected directly to the camera. As well as its deterrent effect, it allows salespersons to see one or more scenes from a single point of the shop. It can also display in real time from a remote post on a Smartphone, Tablet and PC.

Access monitoring

Monitoring accesses to the buildings or areas outside opening hours allows you to capture on video any unauthorised person and check any type of event or act of vandalism. During building opening hours, the CCTV system helps to control accesses, detecting the presence of a person close to the exit or connecting the system to the visitor access control system.

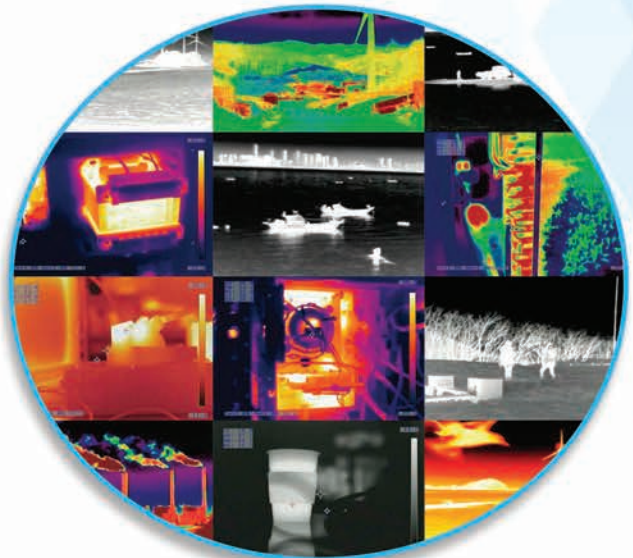
Pan/Tilt & Housing

**IP Zoom Camera, 1080P Full HD Day & Night
1000 meter IR Laser illuminator**



THERMAL CAMERA

Thermal imaging cameras are must have tools for electricians and maintenance technicians. They give you the power to see problems in a way no other technology can, and allow you to inspect equipment quickly and take accurate temperature measurements from a safe distance. Thermal cameras help you find impending trouble before it hurts someone, shuts things down or wastes energy.



INTRUDER ALARM SYSTEM



Intruder Alarm and Burglar Alarm are the number one way of preventing a break-in into your property, not only to protect your possessions but the occupants as well. It is a proven fact that the risk of burglary is significantly reduced after a burglar alarm is installed.

Burglar alarms are electrical house alarms designed to alert the owner to danger. The sensor is connected to a control unit via a low-voltage hard wire or narrowband RF signal which is used to interact with a response device. The most common security sensors indicate the opening of a door or window or detect motion via passive infrared (PIR).





ENVIROALERT. EA800-ip

Battery operated GSM modem
Mobile Dataloggers



NEW
PRODUCT



SENSORS AND ALARMS

MONITORING CRITICAL ENVIRONMENTS HAS NEVER BEEN THIS SIMPLE

Whether it is a residential or commercial application, EnviroAlert provides the flexibility to simultaneously monitor temperature, humidity and/or water in one or more critical environments.





ACCESS CONTROL SYSTEM



TIME AND ATTENDANCE

Right People in Right Place at Right Time
Built for today's workforce



We are committed with the state-of-the-art technology and providing our customers a cost-effective and sophisticated with total system solutions for their access control & time attendance needs.

Access Control System:

The combination of a credential, a reader, a controller, a power supply and an electric unlocking mechanism, which combine to allow a system administrator the ability to grant or deny access to a controlled area. In its simplest form an access control system unlocks a door for an authorized user; in advanced configurations, user access can be designated by day and time, system administration is managed via computer, and audit trails are created.



We offer a flexible range of access control systems, enabling us to cater to the full range of unique, customer requirements from standard single-site ID and access management stand-alone systems up to enterprise-level schemes encompassing many sites over multiple time zones.



NURSE CALL SYSTEM



Nurse Call System (NCS) is designed to streamline communication between patient and caregiver by getting critical needs information to the right staff at the right time. This results in improved quality of care, patient satisfaction and reduced response times to deliver valuable and needed services to patients in any health care facility.

The NURSE-PATIENT signaling system is a user-friendly device designed for patients and care providers in health care and other facilities where a mutual voice connection is not required. The system finds applications mainly in hospitals, be it at intensive care units or – thanks to its easy control – at children’s or psychiatric wards. However , a number of modifications and true user-friendliness predetermine this equipment to prove highly efficient also in operations with strict non-voice communication requirements. The system will also prove useful in nursing homes. In convalescent homes and spa facilities it can be used as a security system in case of emergency.





AUTOMATIC DOORS

Automatic doors provide a convenient and comfortable access solution for various environments and extra values to the spaces and users.

Automatic doors are used throughout the world. From supermarkets to schools and hospitals to offices, you probably use them almost every day of your life. You may be surprised to find out that automatic doors actually originated in ancient Greece. Greek mathematician Heron of Alexandria invented an automatic door system using a series of ropes and pulleys. Water was heated by a large fire and pumped into containers which activated the opening system.

Most automatic doors use motion detection sensors or optical sensors, which are installed on the side of the door, to trigger the opening/closing of doors.

Many people tend to believe that automatic doors are an invention of the modern world, but it may surprise you to know that automatic doors have been around for almost half a century. Over time, these doors have become more technologically sophisticated, but the idea has been around for quite a while!

All automatic doors, irrespective of their type or design, consist of sensors that help trigger the opening/closing of doors when the need arises.



"NEVER MISS A VISITOR"



Anytime and Anywhere

The wifi door bell that lets you answer the door from your smartphone, allows you to see, hear and talk to your visitor from an IOS or Android mobile device with Wi-Fi or 3G/4G coverage anywhere in the world!



With Audio-Video Intercom System you can see who is at your door from anywhere inside your home. Along with access control system, it even lets you remotely open electronic doors to let guests in. We provide A-V Intercom Systems of exceptional quality from renowned manufacturers.

The user can view the camera of entry panel and receive an audio and video call, simultaneously, without losing any communication.





Electronic Article Surveillance (EAS) is a technological method for preventing shoplifting. It usually involves three components: Electronic Antenna, Deactivator or Detacher.

Special tags and labels are fixed to merchandise or books. These tags or labels are removed or "deactivated" by the clerks when the item is properly bought or checked out.

Labels are deactivated using a "Label Deactivator".

While ringing up purchases a cashier should pass each product label across the "Deactivation Pad".

To remove a Hard Tag a cashier uses a "Detacher" which releases the pin.

After a label is deactivated or a tag is removed the customer can then pass by the antenna without any alarm.

At the exits of the store, a detection system sounds an alarm or otherwise alerts the staff when it senses active tags are passing by.





GUARD TOUR SYSTEM

Track guard tours
in nearly any
business environment



Guard Tour App



The new Guard Tour App is a powerful and unique technology that integrates the simplicity and ruggedness of the Steel Pen with the use of a Smartphone. Perfect for Supervisors and/or Security Officers with special duties.

- . Advanced Incidents
- . Supervisor's Reporting
- . Officer's Reporting
- . GPS Geofence Confirmation
- . Time and Attendance
- . SOS



A guard tour system is a system used to help companies and organizations to organize, log and execute guard tours and patrols in their assets ensuring that the officers will accomplish their tasks within the predefined time intervals. There is a wide variety of guard tour systems, which can be divided in two major categories: Wand guard tour systems based on handheld devices and cloud guard tour systems based on modern mobile and cloud technology.

Guard tour systems provide a means to check and record the time that a guard executes his guard tour by scanning specific checkpoints assigned on the area he patrols. Checkpoints are placed in certain points either on buildings or on other locations of a site or remote area and help the managing staff to identify each different location and each portion of a specific territory. The on-site officers can scan checkpoints, send SOS alerts, track and record events and conduct and send reports to the managing staff or the clients, even in real-time.



PUBLIC ADDRESS SYSTEM

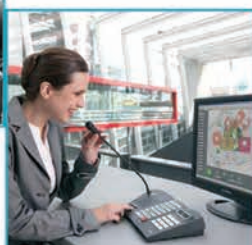


A Public Address System (PA System) is an electronic sound amplification and distribution system with microphone, amplifier and loudspeakers, used to allow a person to address a large public, for example for announcements of movements at large and noisy air and rail terminals.

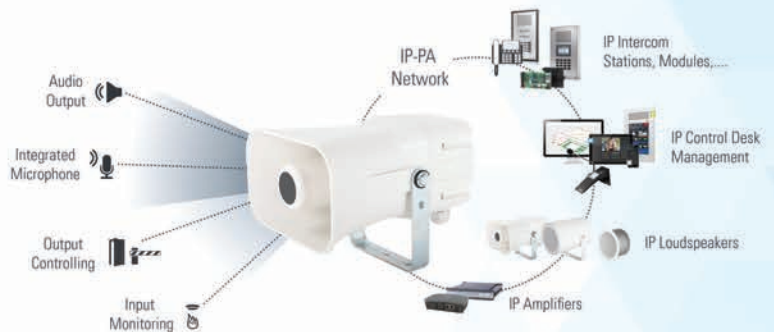
The system can transmit alarm tone and routine voice message, from a central location, to all or selected areas of the facility, in a reliable and safe manner, by the use of loud speakers.

Why Public Address System?

- . For easy passing of information to large number of people at once.



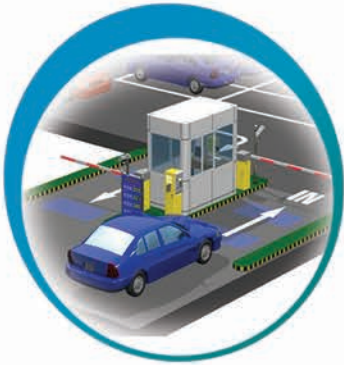
Public Address via IP



SAFETY & SECURITY PRODUCTS

Personal protective equipment (PPE) refers to protective clothing, helmets, goggles, or other garments or equipment designed to protect the wearer's body from injury or infection. The hazards addressed by protective equipment include physical, electrical, heat, chemicals, biohazards, and airborne particulate matter. Protective equipment may be worn for job-related occupational safety and health purposes, as well as for sports and other recreational activities. "Protective clothing" is applied to traditional categories of clothing, and "protective gear" applies to items such as pads, guards, shields, or masks, and others.





GLOBAL SECURITY SYSTEMS W.L.L.

1st Floor, Doctors Complex, Beirut Street, Hawally 32030, Kuwait

Mobile: +965-97234920 Tel: +965-22644052 Fax: +965-22644057

[f](https://www.facebook.com/gsskuwait) www.facebook.com/gsskuwait [t](https://twitter.com/gsskwat) twitter.com/gsskwat

sales@globalsecuritysys.com

www.globalsecuritysys.com